



## **Addendum No. 2**

March 8, 2023

**Construction WWTP Locker Room Upfit  
North Charleston Sewer District  
North Charleston, SC**

Addendum No. 2 is hereby incorporated and made part of the Bid Documents. Except as specifically modified by this document, all other terms and conditions remain in full force and effect.

### **SUBMITTED COMMENTS/ QUESTIONS**

1. Question 1: Please clarify what work needs to be included in the men's room outside of lighting.

Answer: Replace wall sinks with a new laminate countertop with dual sinks and touchless faucet. Faucets shall be Touchless Single Hole Bathroom Faucet in Chrome by matrix décor or equivalent. Replace manual flushing valves with [American Standard Ultima Sensor-Operated 0.5 GPF Urinal Diaphragm-Type Flush Valve in Polished Chrome](#)

2. Question 2: Will toilet tissue holders, grab bars, etc. need to be provided with the partitions?

Answer: Yes, these components should be included with the partitions

3. Question 3: Are partitions being replaced in men's room as well as women's room?

Answer: New partitions are only for the Women's Locker Room.

4. Question 4: Is there an approximate floor plan available for the two areas?

Answer: Record drawings from a 1988 expansion are included.

5. Question 5: Is there a water shutoff valve available for the shower fixture change out?

Answer: In the event there is no water shutoff valve for the showers, water to the building can be turned off on a Saturday to provide time to perform the installation of such a valve.

6. Question 6: Please confirm a framed soffit will not be required above the new women's lockers.

Answer: This is not necessary per the manufacturer of the lockers that were called out in the bid



document.

7. Question 7: Please provide dimensions of existing lockers.

Answer: Please see the attachment for existing locker dimensions. **NOT TO SCALE**

8. Question 8: Please specify quantity and style of ceiling tiles needing to be replaced.

Answer: After further discussion and inspection, there will be no replacement of ceiling tiles.

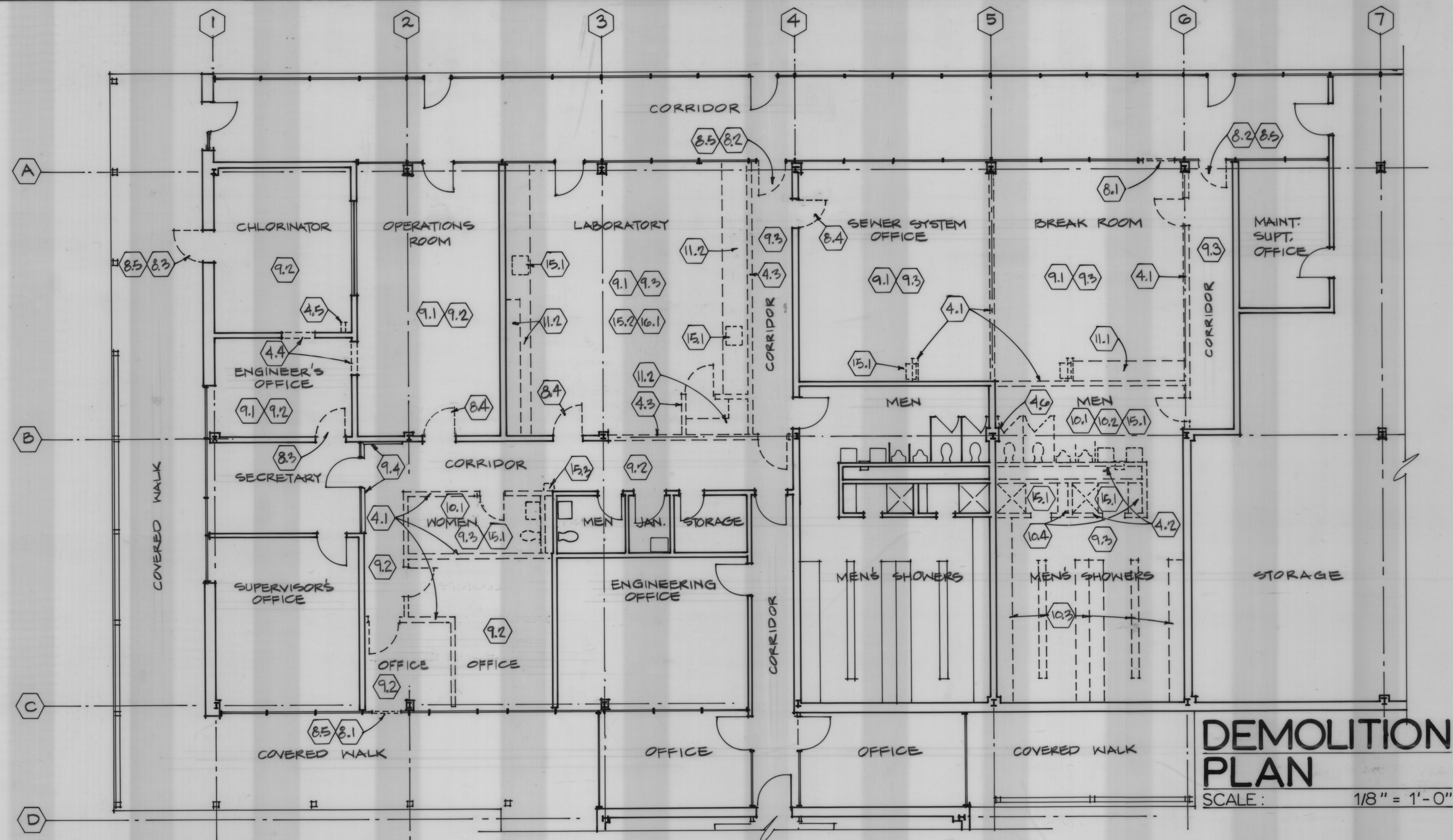
The due date has been extended to **March 30, 2023, by 2:00 PM**. This Addendum No. 2 must be acknowledged in the submission documents.

END OF ADDENDUM No. 2









# LEGEND

- EXISTING TO REMAIN
- - - EXISTING TO BE REMOVED

## DEMOLITION NOTES

- 4.1 REMOVE INTERIOR MASONRY PARTITIONS, INCLUDING H.M. DOORS AND FRAMES, BASE AND FINISHES.
- 4.2 REMOVE MASONRY SHOWER AND CHASE WALLS.
- 4.3 REMOVE CMU/TILE WALLS.
- 4.4 REMOVE PORTION OF CMU WALL, FOR NEW DOOR AND FRAME OPENING.
- 4.5 REMOVE AIR VENT SHAFT.
- 4.6 REMOVE CMU FROM RIGHT SIDE OF COLUMN ONLY. SEE SHEET A-19
- 8.1 REMOVE STOREFRONT SYSTEM GLAZING PANEL, FOR INSTALLATION OF NEW DOOR.
- 8.2 REMOVE DOOR AND FRAME AND REUSE. SEE FLOOR PLAN FOR NEW DOOR LOCATION (SHEETS A-17 AND A-18).
- 8.3 REMOVE DOOR AND FRAME.
- 8.4 REMOVE DOOR.
- 8.5 PROVIDE TEMPORARY SECURITY BARRIERS AT OPENINGS IN EXTERIOR WALLS. COORDINATE WITH OWNER. MAKE TEMPORARY COVERINGS WEATHERTIGHT.
- 9.1 REMOVE V.A.T. FLOORING, DOWN TO CONCRETE.
- 9.2 REMOVE SUSPENDED ACOUSTICAL CEILING SYSTEM. SEE GENERAL NOTE #2, THIS SHEET.
- 9.3 REMOVE SUSPENDED ACOUSTICAL METAL PAN CEILING. SEE GENERAL NOTE #2, THIS SHEET.
- 9.4 REMOVE PANELING AND BACKUP ON WALL, DOWN TO CMU.
- 10.1 REMOVE ALL TOILET ACCESSORIES.
- 10.2 REMOVE ALL TOILET AND URINAL PARTITIONS.
- 10.3 REMOVE ALL LOCKERS, INCLUDING BASE AND SOFFIT, BENCHES AND TOILET ACCESSORIES.
- 10.4 REMOVE SHOWER BENCHES.
- 11.1 REMOVE KITCHEN UNIT.
- 11.2 REMOVE ALL LABORATORY CASEWORK AND SHELVING.
- 15.1 SEE PLUMBING DEMOLITION DRAWING FOR REMOVAL OF ALL PLUMBING FIXTURES.
- 15.2 SEE PLUMBING AND MECHANICAL DEMOLITION DRAWINGS FOR REMOVAL OF LABORATORY EQUIPMENT.
- 15.3 REMOVE DRINKING FOUNTAIN AND REINSTALL AT NEW WALL. SEE SHEET A-18.
- 16.1 SEE ELECTRICAL DEMOLITION DRAWING FOR REMOVAL OF LABORATORY EQUIPMENT.

## GENERAL NOTES (DEMOLITION):

1. PRIOR TO STARTING OF DEMOLITION, THE CONTRACTOR SHALL FORMULATE A COMPLETE DEMOLITION SCHEDULE WITH THE OWNER. DURING DEMOLITION, THE CONTRACTOR SHALL IMMEDIATELY NOTIFY OWNER OF ANY REQUIRED CHANGES TO THE APPROVED DEMOLITION SCHEDULE. THE CONTINUOUS OPERATION OF THE LABORATORY IS CRITICAL, THEREFORE, THE CONTRACTOR SHALL CAREFULLY COORDINATE THE DEMOLITION OF THE EXISTING LAB. AND CONSTRUCTION OF THE NEW LAB., AND THE TRANSFER OF EXISTING EQUIPMENT TO BE REUSED.
2. COORDINATE ALL ARCHITECTURAL DEMOLITION WITH PLUMBING, MECHANICAL, AND ELECTRICAL DEMOLITION. DEMOLITION OF WALLS INCLUDES ELECTRICAL (WIRING, OUTLETS, ETC.) AND PLUMBING. DEMOLITION OF CEILINGS INCLUDES ELECTRICAL (LIGHT FIXTURES AND WIRING) AND MECHANICAL (DIFFUSERS AND DUCTWORK).
3. THE CONTRACTOR SHALL PROTECT FROM DAMAGE, ALL EXISTING CONSTRUCTION TO REMAIN, THROUGHOUT DEMOLITION AND RENOVATION.
4. THE CONTRACTOR SHALL VERIFY WITH OWNER, WHETHER ANY ROOMS WITHIN THE WORK AREA MUST BE OCCUPIED BY THE OWNER DURING CONSTRUCTION.
5. THE CONTRACTOR SHALL NOTIFY THE ENGINEER, PRIOR TO PROCEEDING WITH WORK, IF ACTUAL CONDITIONS VARY FROM DRAWINGS.

RECORD DRAWING



UNIVERSAL ENGINEERING CORPORATION  
CONSULTING ENGINEERS  
BOSTON, MASSACHUSETTS

A JOINT VENTURE

DAVIS AND FLOYD, INC.  
CONSULTING ENGINEERS  
GREENWOOD, S. C. NORTH CHARLESTON, S. C.

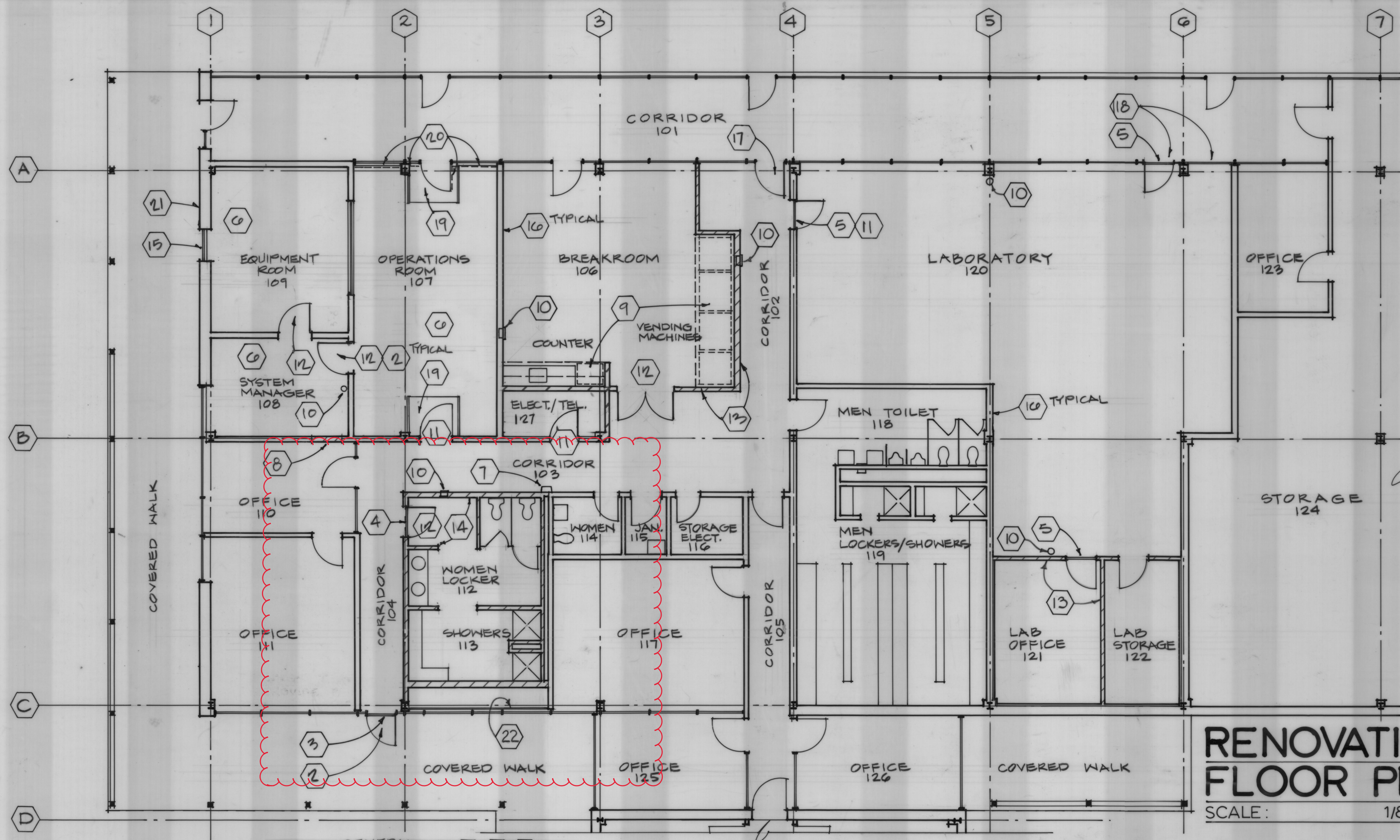
OWNER  
NORTH CHARLESTON SEWER DISTRICT

TITLE  
OPERATIONS BUILDING  
DEMOLITION PLAN

DESIGNED: J.A.W.			
DRAWN: J.A.W.			
CHECKED: J.A.W.	JUL 07 1982	RECORD DRAWINGS	DMP
APPROVED: L.O.G.	DATE	REVISIONS	BY

SCALE: 1/8" = 1'-0"	CONTRACT NO. 4710/8603
DATE: NOVEMBER 1988	SH. 36 OF 219
	A-17 OF 32





## RENOVATION FLOOR PLAN

SCALE: 1/8" = 1'-0"

### LEGEND

EXISTING  
NEW

GENERAL FOR PLAN: 1 2 16

NOTE: SEE SHEET A-19 FOR LARGE SCALE PLANS OF ROOMS 102, 103, 104, 106, 107, 108, 109, 112, 113, 120, 121, 122, AND 127.

### GENERAL DRAWING NOTES

- DO NOT SCALE DRAWINGS. IF DIMENSIONS ARE IN QUESTION, THE CONTRACTOR SHALL BE RESPONSIBLE FOR OBTAINING CLARIFICATION FROM THE ENGINEER BEFORE CONTINUING WITH THE WORK.
- DIMENSIONS ARE TO FACE OF STUD; TO FACE OF CONCRETE, CONCRETE MASONRY UNIT, OR BRICK WALLS; AND TO CENTERLINE OF COLUMNS UNLESS OTHERWISE INDICATED ON THE DRAWINGS.
- DIMENSIONS FOR INTERIOR ELEVATIONS ARE TO FINISHED FACE OF WALLS OR CEILINGS, UNLESS OTHERWISE NOTED.
- COORDINATE LOCATIONS AND ELEVATIONS OF FLOOR DRAINS, GRILLES, LOUVERS, PANELS, ETC. WITH MECHANICAL AND ELECTRICAL CONTRACTORS.
- BOLTING OF WOOD TO STRUCTURAL MEMBERS OR MASONRY SHALL BE, IN GENERAL, WITH A MINIMUM OF 1/2" DIAMETER BOLTS AT 4'-0" O.C., EXCEPT WHERE SHOWN OTHERWISE. SITUATIONS REQUIRING SPECIAL BOLTING SHALL BE WITH THE SIZE AND SPACING OF BOLTS TO SUIT THE CONDITIONS.
- PROVIDE LINTELS OR HEADERS OVER ALL OPENINGS INCLUDING THOSE REQUIRED FOR DUCTWORK, PIPES, LOUVERS, GRILLES, DAMPERS, ETC..
- ALL CONCRETE CURBS AND EQUIPMENT PADS SHALL BE FURNISHED BY THE GENERAL CONTRACTOR. SIZE AND LOCATION SHALL BE DETERMINED BY THE MECHANICAL CONTRACTOR.
- ROOMS AND AREAS NOT LISTED IN THE ROOM FINISH SCHEDULE SHALL REMAIN "AS IS" WITH EXISTING FINISHES. HOWEVER, THE CONTRACTOR SHALL PATCH AND REFINISH (TO MATCH EXISTING ADJACENT SURFACES) ALL EXISTING CONSTRUCTION SCHEDULED TO REMAIN "AS IS", WHICH IS DAMAGED BY THE WORK UNDER THIS CONTRACT.

### CONSTRUCTION NOTES

- REFER TO SHEET A-19 FOR DIMENSIONED LAYOUT OF RENOVATED FLOOR PLAN.
- SEE SHEET A-19 FOR DOOR MARKS AND A-20 FOR DOOR SCHEDULE AND DETAILS.
- PROVIDE METAL THRESHOLD AT DOOR SILL.
- PROVIDE THRESHOLD AT CERAMIC TILE/VINYL COMPOSITION TILE INTERSECTION.
- PROVIDE THRESHOLD AT SPECIAL LAB FLOORING/VINYL COMPOSITION TILE INTERSECTION.
- COMPUTER ACCESS FLOOR MANUFACTURER TO PROVIDE STEP ASSEMBLY, RAILINGS, AND CLOSURE PANELS AS PART OF ACCESS FLOORING PACKAGE.
- REATTACH EXISTING DRINKING FOUNTAIN TO NEW CMU WALL AND RECONNECT TO EXISTING PLUMBING. SEE PLUMBING DRAWINGS.
- IN-FILL WALL FINISH WITH METAL STUDS. SEE SHEET A-13.
- REFRIGERATOR AND VENDING MACHINES ARE OWNER FURNISHED EQUIPMENT (O.F.E.).
- FIRE EXTINGUISHER: SEE FIRE EXTINGUISHER LOCATION SCHEDULE ON THIS SHEET.
- WOOD DOOR IN EXISTING METAL FRAME.
- WOOD DOOR IN HOLLOW METAL FRAME.
- METAL STUD AND GYPSUM BOARD PARTITIONS. SEE SHEET A-19.
- CMU AND CERAMIC TILE PARTITIONS. SEE SHEET A-19.
- METAL FIXED WINDOW IN EXISTING DOOR OPENING.
- SEE SHEET A-19 FOR WALL TYPES AND FINISHES TO EXISTING WALLS.
- REMOVE DOOR AND FRAME, AND REINSTALL FOR OPPOSITE SWING. SEE SHEET A-20.
- REMOVE GLASS AND DOOR PANELS ON EACH SIDE OF COLUMN LINE 6. REINSTALL ON OPPOSITE SIDES. SEE SHEET A-19.
- VINYL COMPOSITION TILE ON EXISTING FLOOR, AT DOOR ENTRY.
- SUN CONTROL BLINDS ON WINDOWS AND DOOR, FULL HEIGHT TO CEILING. SEE SPECIFICATIONS ON THIS SHEET.
- PROVIDE SOLID CLOSURE PANEL ON INSIDE OF 3-EXISTING 8" X 8" BRICK VENTS IN EXTERIOR WALL. USE PRESSURE-TREATED, PAINTED 3/4" PLYWOOD, SCREWED TO WALL.
- OPAQUE PANELS BEHIND EXISTING GLAZING. SEE SHEET A-19.

### ROOM FINISH CODE

#### FLOOR

CFS - COMPUTER FLOOR  
VCT - VINYL COMPOSITION TILE  
SLF - SPECIAL LAB FLOORING  
CT - CERAMIC TILE

#### BASE

VBSE - VINYL BASE  
SLB - SPECIAL LAB BASE  
CT - CERAMIC TILE

#### WALL

GYP BD - GYPSUM BOARD (PAINTED)  
CT - CERAMIC TILE  
GYP BD/(WR) - GYPSUM BOARD - WATER RESISTANT (PAINTED)

#### CEILING

ATC-1 - SUSPENDED ACOUSTICAL TILE, 24" X 24"  
ATC-2 - SUSPENDED ACOUSTICAL CEILING TILE, 24" X 24" (MOISTURE AND CHEMICAL RESISTANT)  
GYP BD - SUSPENDED WATER RESISTANT GYPSUM BOARD (PAINTED)

NOTE: PAINT WALLS IN LABORATORY #120 WITH LOW GLOSS EPOXY PAINT.

### FIRE EXTINGUISHER SCHEDULE

#### FIRE EXTINGUISHER TYPES (PORTABLE):

ABC Type, 5 lbs. nominal capacity, multi-purpose dry chemical, conform to NFPA 10, UL listed. Total of 6.

#### MOUNTING DEVICES:

CABINETS: Manufacturer's standard cabinet sized for extinguisher capacity, white baked enamel finish, door with narrow vision panel and the lettering "FIRE EXTINGUISHER." Fully-recessed into a rated 8" WALL. Total of 3.

BRACKETS: Manufacturer's standard wall brackets, sized for extinguisher capacity, heavy gauge steel with white baked enamel finish. Total of 3.

### FIRE EXTINGUISHER LOCATION SCHEDULE

- MOUNT ON BRACKET WITH TOP AT 5'-0" AFF. AT THESE ROOMS:  
1-IN SYSTEMS MANAGER ROOM #108.  
2-IN LABORATORY #120.
- MOUNT IN RECESSED CABINET WITH BOTTOM AT 3'-10" AFF. AT THESE AREAS:  
1-IN CORRIDOR #102  
1-IN CORRIDOR #103  
1-IN BREAKROOM #106

### SPECIAL LABORATORY FLOORING AND BASE:

SOLID VINYL SHEET FLOORING, "MEDINTECH" BY ARMSTRONG. FLOORING IS HOMOGENEOUS, NONLAYERED, AND DESIGNED FOR CHEMICAL RESISTANCE. MEET THE FOLLOWING STANDARDS: L-F-475A (3), TYPE II, GRADE A; ASTM E 648; ASTM E84 AND ASTM E662. COLOR SHALL BE #86410 - "PEARL GRAY". MINIMUM THICKNESS IS .080 - INCHES (NOMINAL). INSTALL FLOORING WITH THE HEAT - WELDED METHOD, WITH A MINIMUM OF SEAMS. IN STRICT CONFORMANCE WITH MANUFACTURER'S WRITTEN INSTRUCTIONS, PROVIDE AN INTEGRAL COVE BASE BY EXTENDING THE FLOORING MATERIAL 4 INCHES UP THE WALL, SUPPORTED BY A COVE STICK HAVING A MINIMUM RADIUS OF 3/4", AND ADHERING TO THE WALL WITH ARMSTRONG "S-580" ADHESIVE. CAP THE INTEGRAL COVE WITH AN APPROVED CAP STRIP INSTALLED IN ACCORDANCE WITH THE MANUFACTURER'S RECOMMENDATIONS.

### ROOM FINISH SCHEDULE

ROOM NO.	ROOM NAME	FLOOR	BASE	WALL	CEILING
102	CORRIDOR	VCT	VBSE	GYP BD	ATC-1
103	CORRIDOR	VCT	VBSE	GYP BD	ATC-1
104	CORRIDOR	VCT	VBSE	GYP BD	ATC-1
106	BREAKROOM	VCT	VBSE	GYP BD	ATC-1
107	OPERATIONS ROOM	CFS/VCT	VBSE	GYP BD	ATC-1
108	SYSTEM MANAGER	CFS	VBSE	GYP BD	ATC-1
109	EQUIPMENT ROOM	CFS	VBSE	GYP BD	ATC-1
112	WOMEN'S LOCKER	CT	CT	CT	GYP BD
113	WOMEN'S SHOWER	CT	CT	CT	GYP BD
120	LABORATORY	SLF	SLB	GYP BD (WR)	ACT-2
121	LAB OFFICE	VCT	VBSE	GYP BD	ACT-1
122	LAB STORAGE	SLF	SLB	GYP BD (WR)	ATC-2
127	ELECT./TEL	VCT	VBSE	GYP BD	ATC-1

NOTE: ROOMS AND AREAS NOT LISTED IN SCHEDULE SHALL REMAIN "AS IS" WITH EXISTING FINISHES.

### SUN CONTROL BLINDS

HORIZONTAL BLINDS, EQUAL TO "FLEX-KING" BY LEVELOR, HEAVY-DUTY, WITH 2 INCH WIDE SLATS, AND REINFORCED PLASTIC TAPE LADDER. PROVIDE BLINDS WITH MANUFACTURER'S STANDARD MOUNTING DEVICES AND OPERATION ACCESSORIES. COLOR SHALL BE MANUFACTURER'S STANDARD OFF-WHITE. SYSTEM SHALL BE CAPABLE OF RECEIVING POSSIBLE FUTURE MOTORIZED CONTROL.

### METAL LOCKERS

Lockers shall be manufactured by FENCO or equal. Lockers shall be 9" wide x 15" deep x 72" high, double tier without legs and anchored to a concrete base. Provide frame of 16 gauge channels or 12 gauge angles, minimum, with corners electrically welded. Top, bottom, back, sides and shelves shall be 24 gauge steel minimum. Doors shall be 16 gauge minimum sheet steel, flanged at all edges, with six (6) louver openings at top and bottom of door. Door shall swing 180 degrees on heavy duty full-loop, 5-knuckle, tight pin, 2" high, minimum 0.050" thick steel hinges. Provide three (3) hinges per door. Provide positive automatic, prelocking, pry-resistant latch and pull with lift-up handle containing strike and hole for padlock. Provide a 3 point locking device which may be locked while doors are open and closed without unlocking and without damaging locking mechanism. Provide rubber silencers at each latching lug and at top and bottom of latching bars. Furnish each locker with the following: one (1) double prong ceiling hook, three (3) single prong wall hooks, one (1) polished aluminum number plate with 1/2 inch high black etched letters. Provide sloping tops made of 20 gauge sheet steel at approximately 23 degrees pitch. Provide closure at ends. All lockers, sloping tops, trim and metal filler panels shall be the same baked-on enamel finish color. Color shall be selected by Engineer.

### COMPUTER ACCESS FLOOR

#### 1. DESCRIPTION:

A. Access flooring consisting of 24" x 24" square, modular steel, cement-filled panels supported by and secured to adjustable pedestals, as manufactured by DONN CORPORATION.

#### 2. MATERIALS:

- Steel, cement-filled panels shall support a rolling load of 1000 lbs., and a concentrated load of 1250 lbs. with a safety factor of 2.5. Provide panels with factory-applied 1/8" THICK HIGH PRESSURE LAMINATE.
- Steel pedestal units shall support a 5,000-lb. load without permanent deformation.
- Accessories: Provide manufacturer's standard steps, handrails, closure panels, expansion joints and perimeter support.

#### 3. SYSTEM:

A. "STATIC-CONTROL FLOOR COVERING RESISTANCE: NOT LESS THAN 500,000 OHMS NOR MORE THAN 20,000 MEGOHMS, MEASURED ACROSS SURFACE ON FLOOR COVERING THROUGH PANEL TO UNDERSTRUCTURE PER NFPA 54 TEST METHOD FOR CONDUCTIVE FLOORING"

#### 4. INSTALLATION:

A. Install complete access floor system in accordance with manufacturer's written instructions, level and without vibrations.

UNIVERSAL ENGINEERING CORPORATION  
CONSULTING ENGINEERS  
BOSTON, MASSACHUSETTS

A JOINT VENTURE

DAVIS AND FLOYD, INC.  
CONSULTING ENGINEERS  
GREENWOOD, S.C. NORTH CHARLESTON, S.C.

OWNER  
NORTH CHARLESTON SEWER DISTRICT

TITLE  
OPERATIONS BUILDING  
RENOVATION FLOOR PLAN

DESIGNED:   
DRAWN:   
CHECKED:   
APPROVED: LQG

JUL 01 1992  
DATE

RECORD DRAWINGS  
REVISIONS

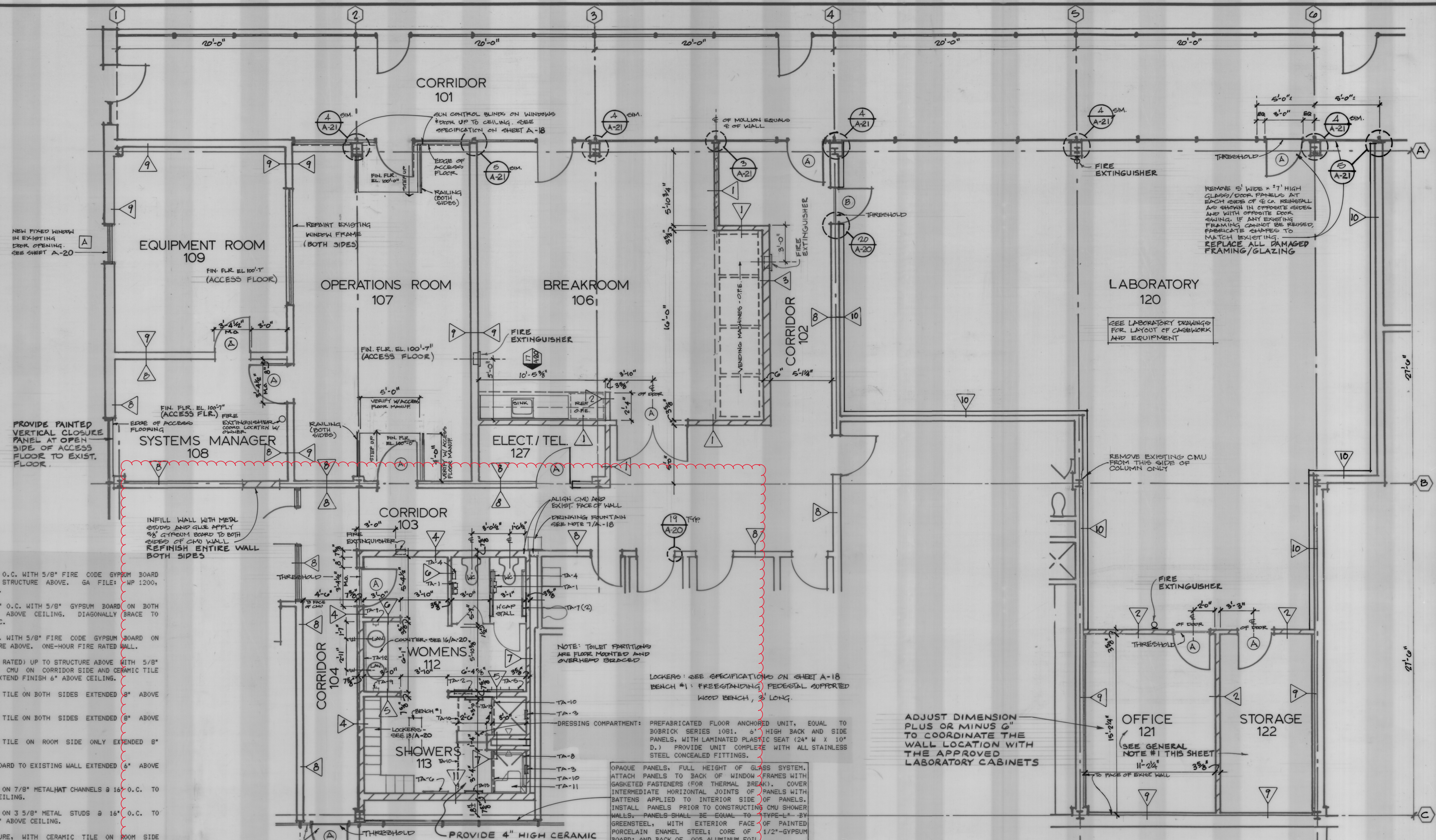
SCALE:  
1/8" = 1'-0"  
DATE:  
NOVEMBER 1988

CONTRACT NO.  
4110/3603  
SH.37 OF 219  
A-18 OF 32



RECORD DRAWING



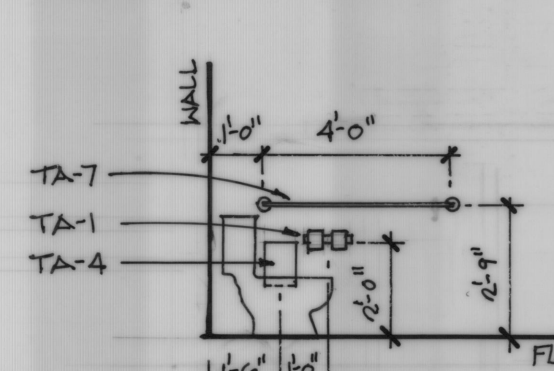


- WALL TYPES**
- 3 5/8" METAL STUDS @ 16" O.C. WITH 5/8" FIRE CODE GYPSUM BOARD ON BOTH SIDES UP TO STRUCTURE ABOVE. GA FILE: WP 1200, ONE-HOUR FIRE RATED WALL.
  - 3 5/8" METAL STUDS @ 16" O.C. WITH 5/8" GYPSUM BOARD ON BOTH SIDES, EXTENDED 6" ABOVE CEILING. DIAGONALLY BRACE TO STRUCTURE ABOVE @ 48" O.C.
  - 6" METAL STUDS @ 16" O.C. WITH 5/8" FIRE CODE GYPSUM BOARD ON BOTH SIDES UP TO STRUCTURE ABOVE. ONE-HOUR FIRE RATED WALL.
  - 8" CMU WALL (1-HOUR FIRE RATED) UP TO STRUCTURE ABOVE WITH 5/8" GYPSUM BOARD GLUED TO CMU ON CORRIDOR SIDE AND CERAMIC TILE APPLIED TO ROOM SIDE. EXTEND FINISH 6" ABOVE CEILING.
  - 8" CMU WALL WITH CERAMIC TILE ON BOTH SIDES EXTENDED 8" ABOVE CEILING.
  - 4" CMU WALL WITH CERAMIC TILE ON BOTH SIDES EXTENDED 8" ABOVE CEILING.
  - 4" CMU WALL WITH CERAMIC TILE ON ROOM SIDE ONLY EXTENDED 8" ABOVE CEILING.
  - GLUE APPLY 5/8" GYPSUM BOARD TO EXISTING WALL EXTENDED 6" ABOVE CEILING.
  - ATTACH 5/8" GYPSUM BOARD ON 7/8" METAL/HAT CHANNELS @ 16" O.C. TO WALL EXTENDED 6" ABOVE CEILING.
  - ATTACH 5/8" GYPSUM BOARD ON 3 5/8" METAL STUDS @ 16" O.C. TO EXISTING WALL EXTENDED 6" ABOVE CEILING.
  - 8" CMU WALL UP TO STRUCTURE, WITH CERAMIC TILE ON ROOM SIDE ONLY, EXTENDED 8" ABOVE CEILING.

- TOILET ACCESSORIES LIST**
- TA-1 TOILET TISSUE DISPENSER
  - TA-2 PAPER TOWEL DISPENSER/DISPOSAL UNIT
  - TA-3 SOAP DISH
  - TA-4 SANITARY NAPKIN DISPOSAL UNIT
  - TA-5 ROBE HOOK - 62" AFF
  - TA-6 FRAMED MIRROR 24" X 60"
  - TA-7 GRAB BAR - 48" LONG
  - TA-8 GRAB BAR @ SHOWER - (2) 24" LONG HORIZ BARS W/32" HIGH VERT. ARM
  - TA-9 SOAP DISPENSER
  - TA-10 SHOWER ROD - 72" AFF W/SHOWER CURTAIN AND HOOKS
  - TA-11 H.C. FOLD-DOWN SHOWER SEAT
  - TA-12 3'-10" HIGH X WIDTH OF COUNTER: FRAMELESS MIRROR W/CONCEALED MOUNTING DEVICES
  - TA-13 18" TOWEL BAR - 40" AFF

DOOR AND FRAME TO FIT INTO EXISTING METAL FRAME SYSTEM

CUT EXISTING GLAZING FOR REUSE AT SIDES OF DOOR OR PROVIDE NEW GLAZING TO MATCH. REPLACE ALL DAMAGED FRAMING/GLAZING.



**MOUNTING HEIGHTS**

# **FLOOR PLAN**

NOTE: TOILET PARTITIONS ARE FLOOR MOUNTED AND OVERHEAD BRACED

LOCKERS: SEE SPECIFICATIONS ON SHEET A-18 BENCH #1: FREESTANDING PEDESTAL SUPPORTED WOOD BENCH, 3' LONG.

DRESSING COMPARTMENT: PREFABRICATED FLOOR ANCHORED UNIT, EQUAL TO BOBBICK SERIES 1081. 6" HIGH BACK AND SIDE PANELS, WITH LAMINATED PLASTIC SEAT (24" W X 10" D.) PROVIDE UNIT COMPLETE WITH ALL STAINLESS STEEL CONCEALED FITTINGS.

OPAQUE PANELS, FULL HEIGHT OF GLASS SYSTEM. ATTACH PANELS TO BACK OF WINDOW FRAMES WITH GASKETED FASTENERS (FOR THERMAL BREAK). COVER INTERMEDIATE HORIZONTAL JOINTS OF PANELS WITH BATTENS APPLIED TO INTERIOR SIDE OF PANELS. INSTALL PANELS PRIOR TO CONSTRUCTING CMU SHOWER WALLS. PANELS SHALL BE EQUAL TO TYPE-L-1 BY GREENSTEEL, WITH EXTERIOR FACE OF PAINTED PORCELAIN ENAMEL STEEL; CORE OF 1/2" GYPSUM BOARD; AND BACK OF .005 ALUMINUM FOIL

PROVIDE 4" HIGH CERAMIC TILE CURB AT THE FRONT OF EACH SHOWER

ADJUST DIMENSION PLUS OR MINUS 6" TO COORDINATE THE WALL LOCATION WITH THE APPROVED LABORATORY CABINETS

- GENERAL NOTES**
- FOLLOWING THE AWARD OF THE CONTRACT, THE OWNER SHALL PROVIDE THE CONTRACTOR WITH A LISTING OF FURNISHINGS FOR RM. NO. 121 AND 122.
  - DIMENSIONS ARE TO FACE OF EXISTING MASONRY WALLS, WHERE APPLICABLE, UNLESS OTHERWISE NOTED.
  - EXACT COLUMN TO COLUMN DIMENSIONS SHALL BE FIELD VERIFIED.
  - REPAINT CORRIDOR SIDE OF ALL EXISTING DOORS AND FRAMES TO REMAIN IN CORRIDORS 102, 103, AND 104.
  - SEE DRAWING SHEET A-21, PARTIAL PLAN T, FOR OWNER FURNISHED EQUIPMENT (O.F.E.) IN ROOMS 101, 108 & 109.



<b>UNIVERSAL ENGINEERING CORPORATION</b> CONSULTING ENGINEERS BOSTON, MASSACHUSETTS	<b>DAVIS AND FLOYD, INC.</b> CONSULTING ENGINEERS GREENWOOD, S.C. NORTH CHARLESTON, S.C.	<b>OWNER</b> NORTH CHARLESTON SEWER DISTRICT	<b>TITLE</b> OPERATIONS BUILDING FLOOR PLAN	<b>DESIGNED:</b> JAW <b>DRAWN:</b> ALW <b>CHECKED:</b> JAW <b>APPROVED:</b> LOG	<b>SCALE:</b> 1/4" = 1'-0" <b>DATE:</b> NOVEMBER 1983 <b>REVISIONS:</b> <b>BY:</b>	<b>CONTRACT NO.</b> 4710/B603 <b>SH. 38 OF 219</b> <b>A-19 OF 32</b>
---	--	---	--	--	---	--



# DOOR AND FRAME SCHEDULE

LOCATION	DOOR NO.	DOOR			FRAME			FIRE RATING	REMARKS																																																																																																																																																																																																																																																																																																																																																																																																																																																																																																																																																																																																																																																																																																																																																																																																																																																																																																																																																																																																																																																																																																																																																																																																																																																																																																																																																																																																		
		SIZE			DETAIL																																																																																																																																																																																																																																																																																																																																																																																																																																																																																																																																																																																																																																																																																																																																																																																																																																																																																																																																																																																																																																																																																																																																																																																																																																																																																																																																																																																																						
		INCHES																																																																																																																																																																																																																																																																																																																																																																																																																																																																																																																																																																																																																																																																																																																																																																																																																																																																																																																																																																																																																																																																																																																																																																																																																																																																																																																																																																																																									
		W	H	T	MAT.	TYPE	HEAD			JAMB	SILL																																																																																																																																																																																																																																																																																																																																																																																																																																																																																																																																																																																																																																																																																																																																																																																																																																																																																																																																																																																																																																																																																																																																																																																																																																																																																																																																																																																																
	102A																																																																																																																																																																																																																																																																																																																																																																																																																																																																																																																																																																																																																																																																																																																																																																																																																																																																																																																																																																																																																																																																																																																																																																																																																																																																																																																																																																																																										

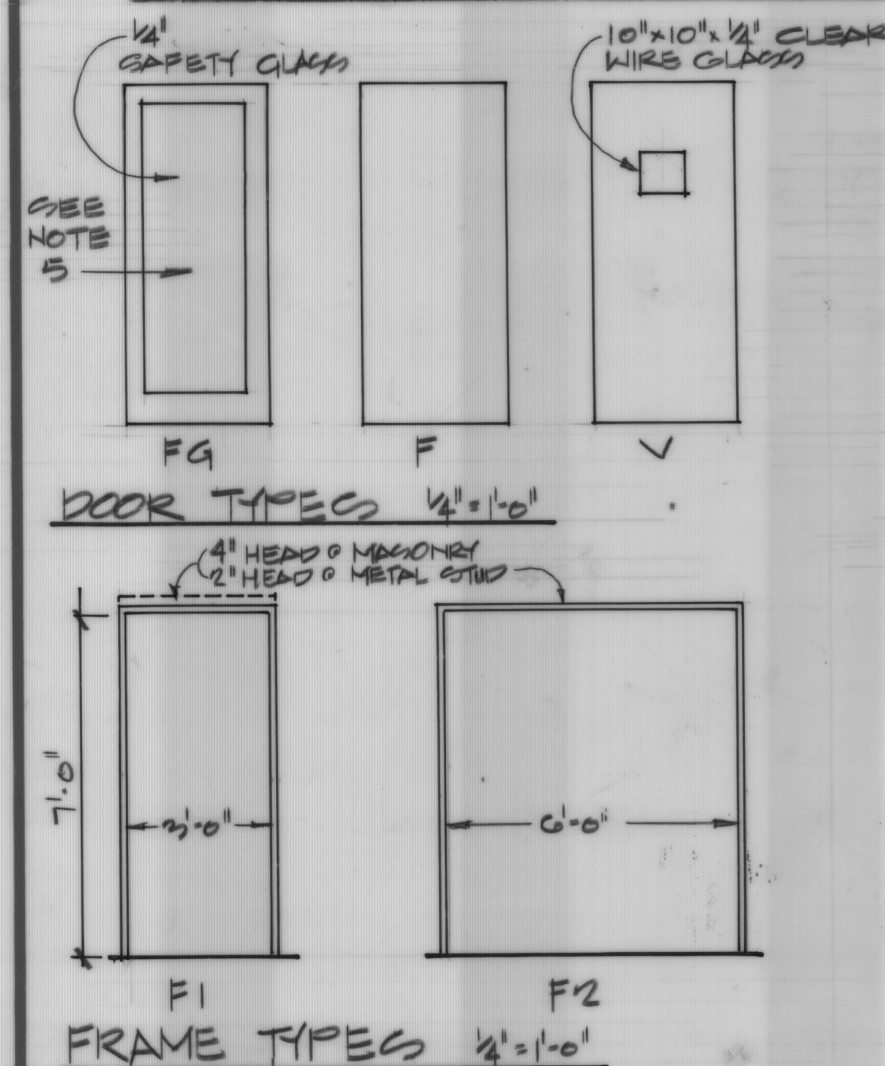
1 HEAD DETAIL  
1 1/2" x 1'-0"

2 HEAD DETAIL  
1 1/2" x 1'-0"

3 HEAD DETAIL  
1 1/2" x 1'-0"

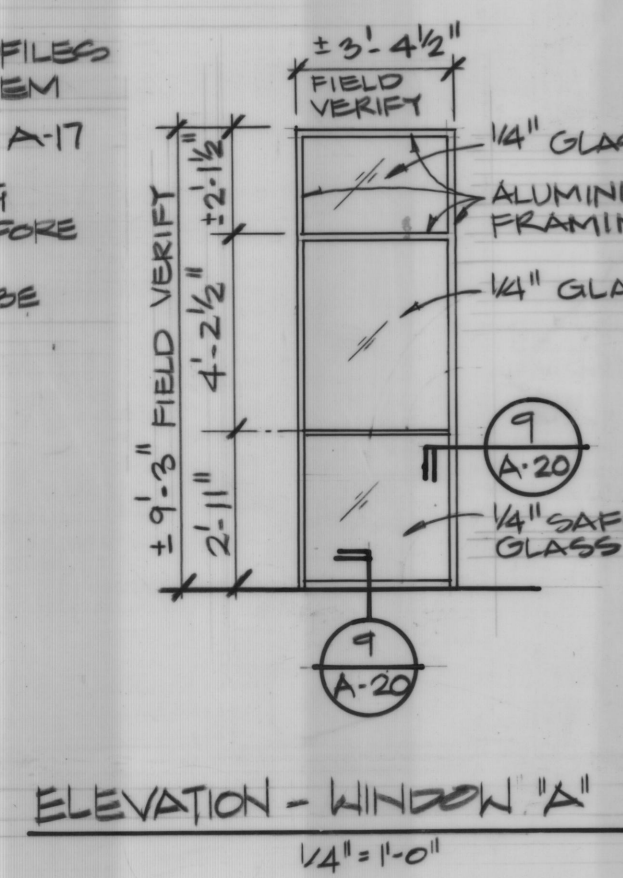
4 DELETED  
1 1/2" x 1'-0"

5 JAMB DETAIL  
1 1/2" x 1'-0"



## NOTES:

1. CONTRACTOR SHALL MATCH NEW DOOR, GLASS, AND FRAME PROFILES WITH EXISTING STOREFRONT SYSTEM
2. SEE DEMOLITION NOTE 8.2 ON SHEET A-17
3. CONTRACTOR SHALL VERIFY EXISTING WIDTH & HEIGHT OF DOOR FRAMES BEFORE ORDERING NEW DOORS
4. IF EXISTING FRAME OR DOOR CANNOT BE USED, CONTRACTOR SHALL MATCH NEW TO EXISTING CONDITIONS
5. NEW GLASS - EXTERIOR TO MATCH EXISTING GLASS



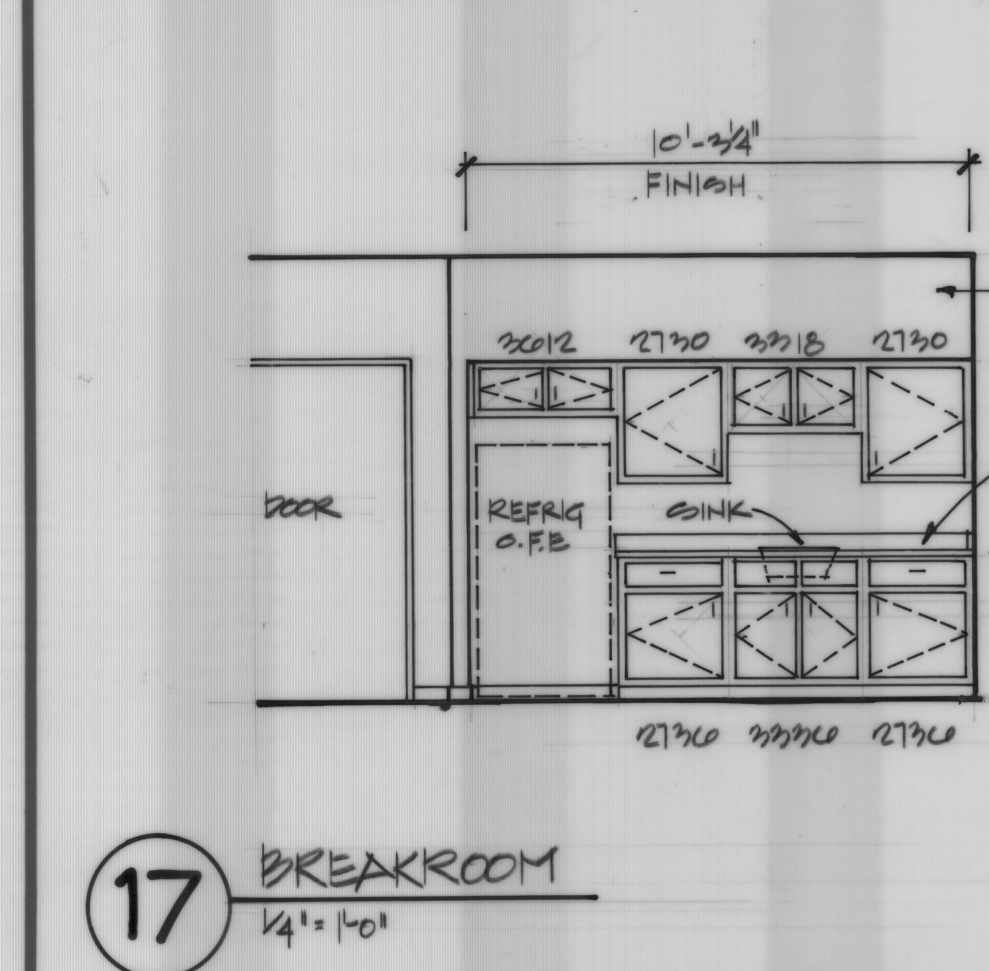
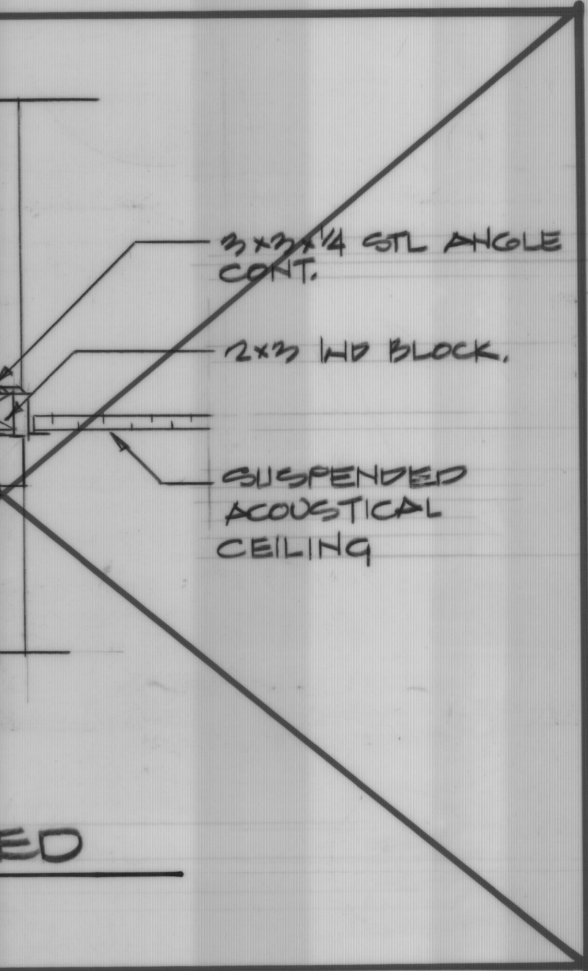
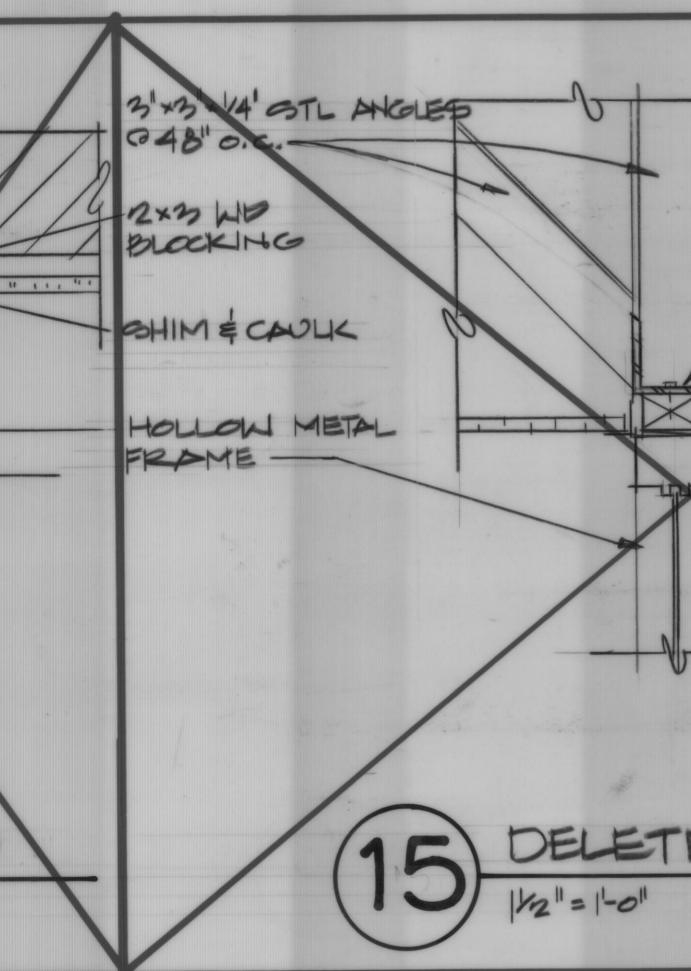
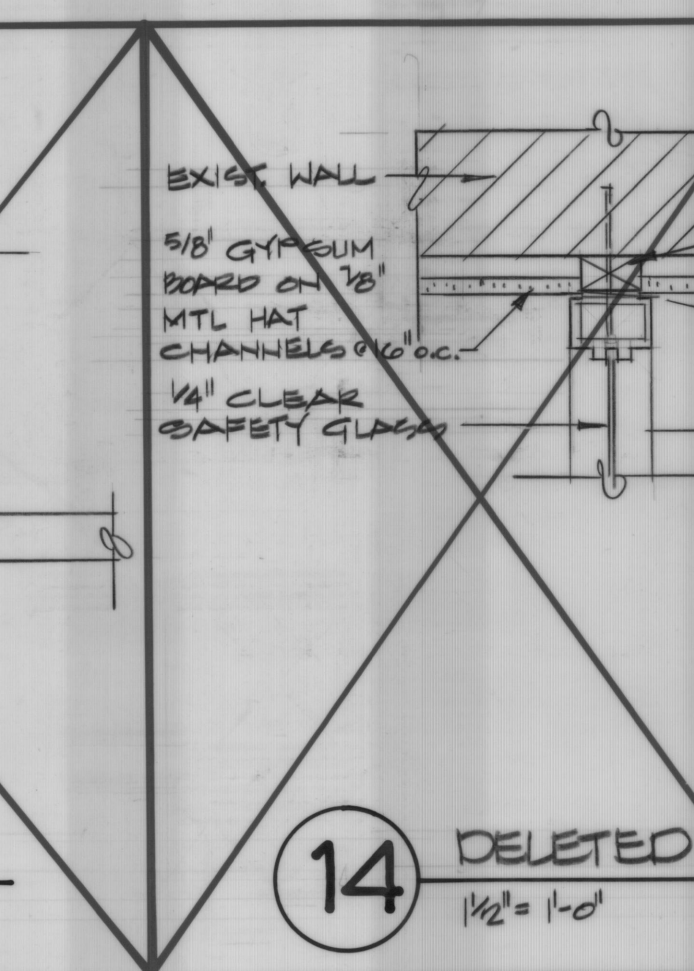
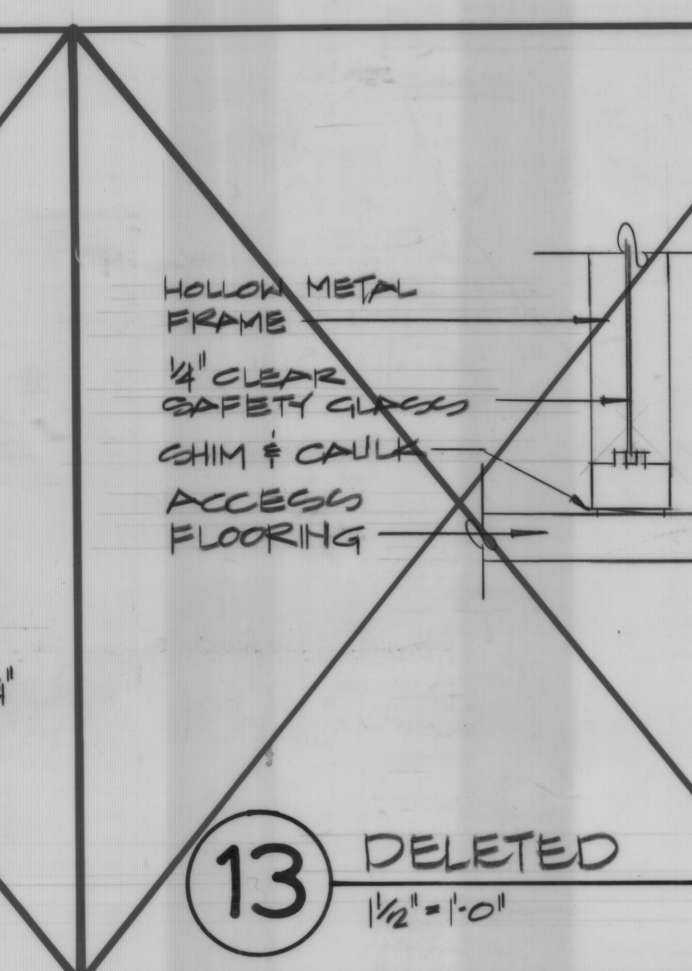
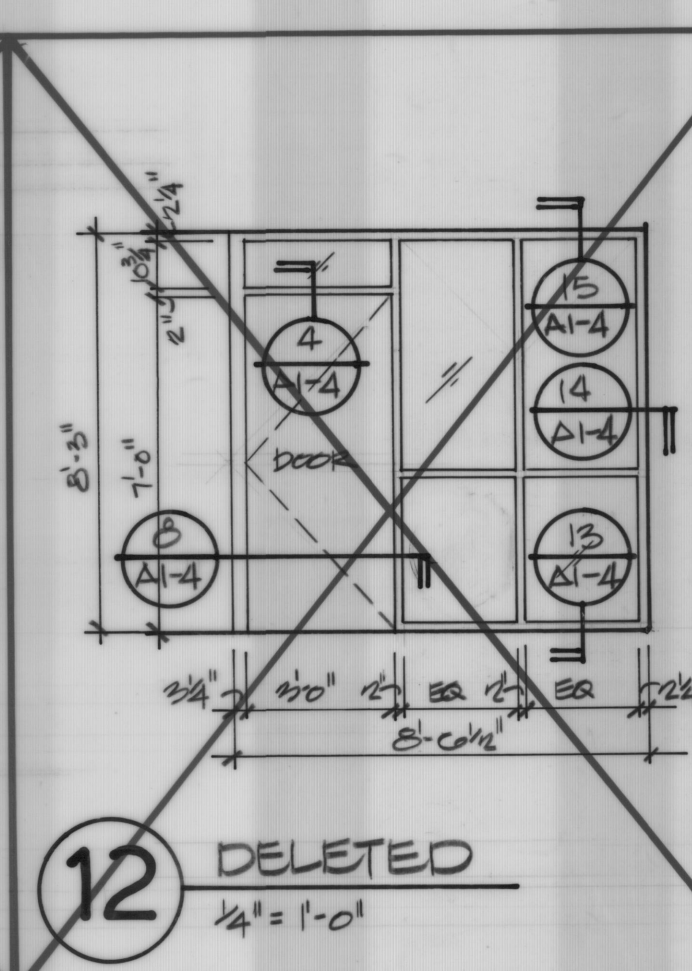
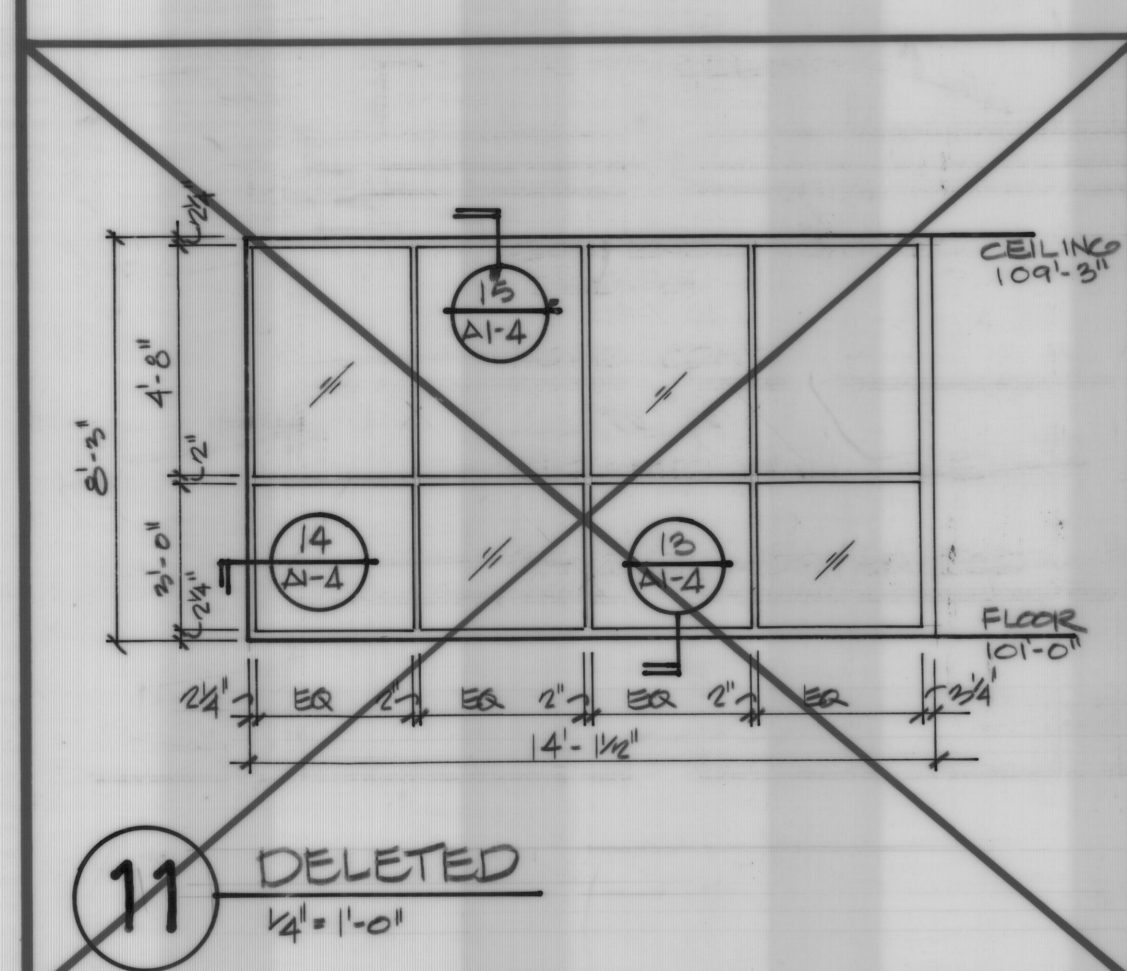
6 JAMB DETAIL  
1 1/2" x 1'-0"

7 JAMB DETAIL  
1 1/2" x 1'-0"

8 DELETED  
1 1/2" x 1'-0"

9 WINDOW 'A' DETAILS  
1 1/2" x 1'-0"

10 SILL DETAIL  
1 1/2" x 1'-0"

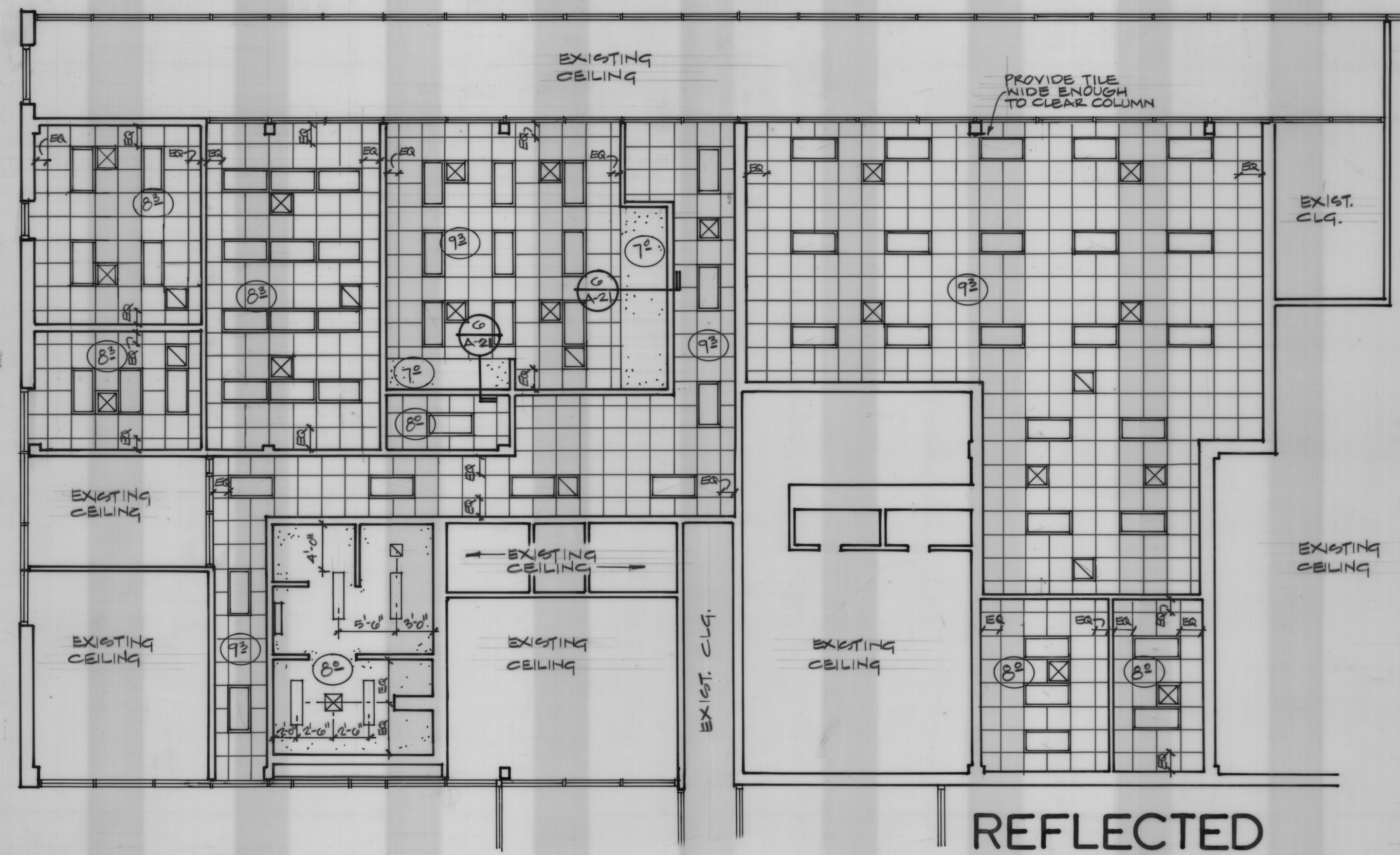


18 LOCKER SECTION  
1 1/2" x 1'-0"

19 GYP BD EXIST. DOOR  
1 1/2" x 1'-0"

20 GYP BD EXIST. DOOR  
1 1/2" x 1'-0"





## REFLECTED CEILING PLAN

SCALE 1/8" = 1'-0"

NOTE: IN OPERATIONS ROOM 107, DISREGARD THE LIGHTING LAYOUT AS SHOWN. PROVIDE LIGHTING LAYOUT AS SHOWN ON DRAWING E-45.

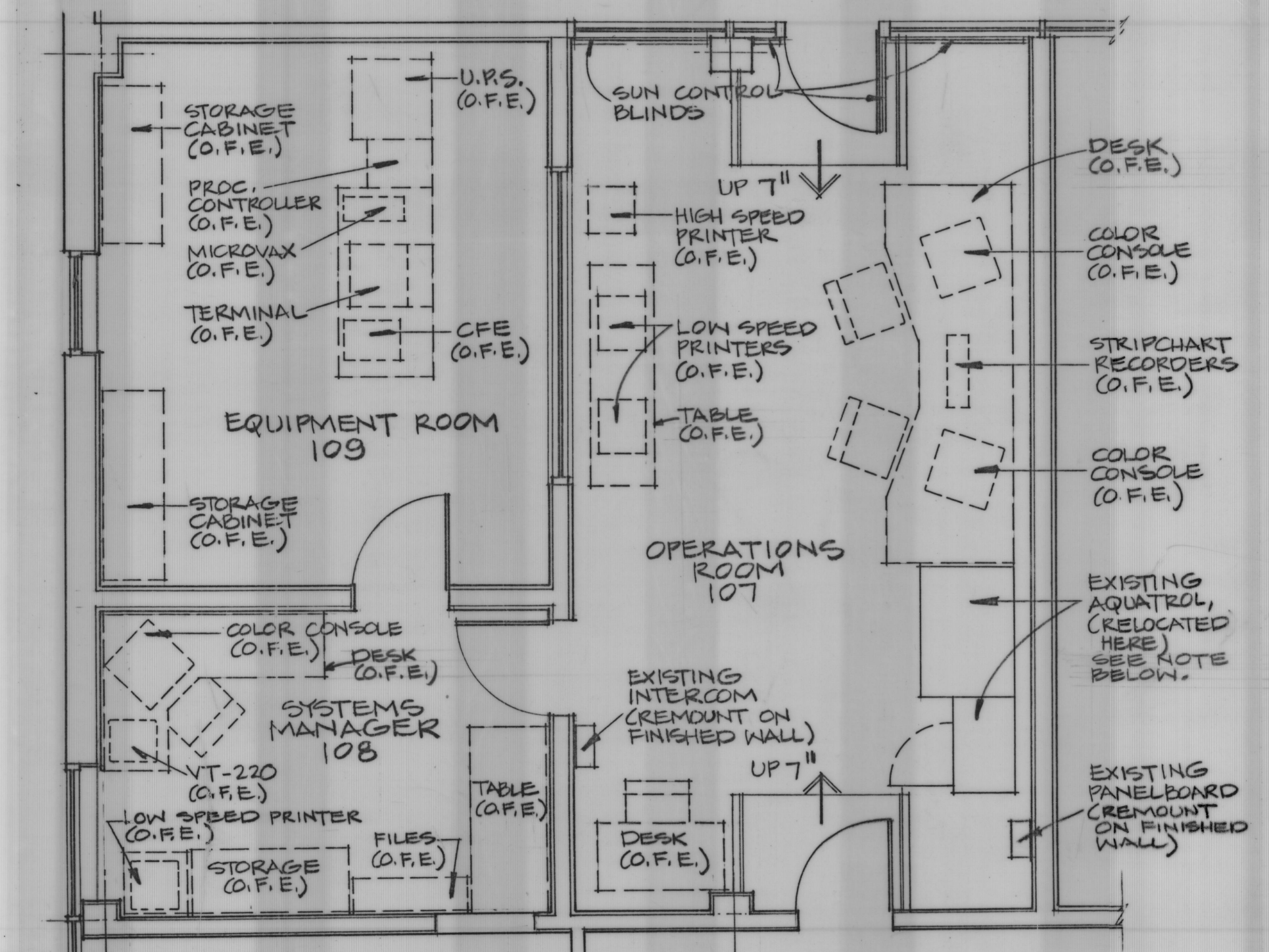
NOTE: COORDINATE REFLECTED CEILING PLAN WITH LIGHTING RENOVATION PLAN AND WITH HVAC PLAN. NOTIFY ENGINEER OF ANY DISCREPANCIES.

### SYMBOL LEGEND

- LAY-IN CEILING LIGHT
- SURFACE MTD CEILING LIGHT
- ⊗ AIR SUPPLY
- ⊗ AIR SUPPLY
- ⊗ AIR RETURN
- ⊗ EXHAUST FAN

### CEILING HEIGHTS

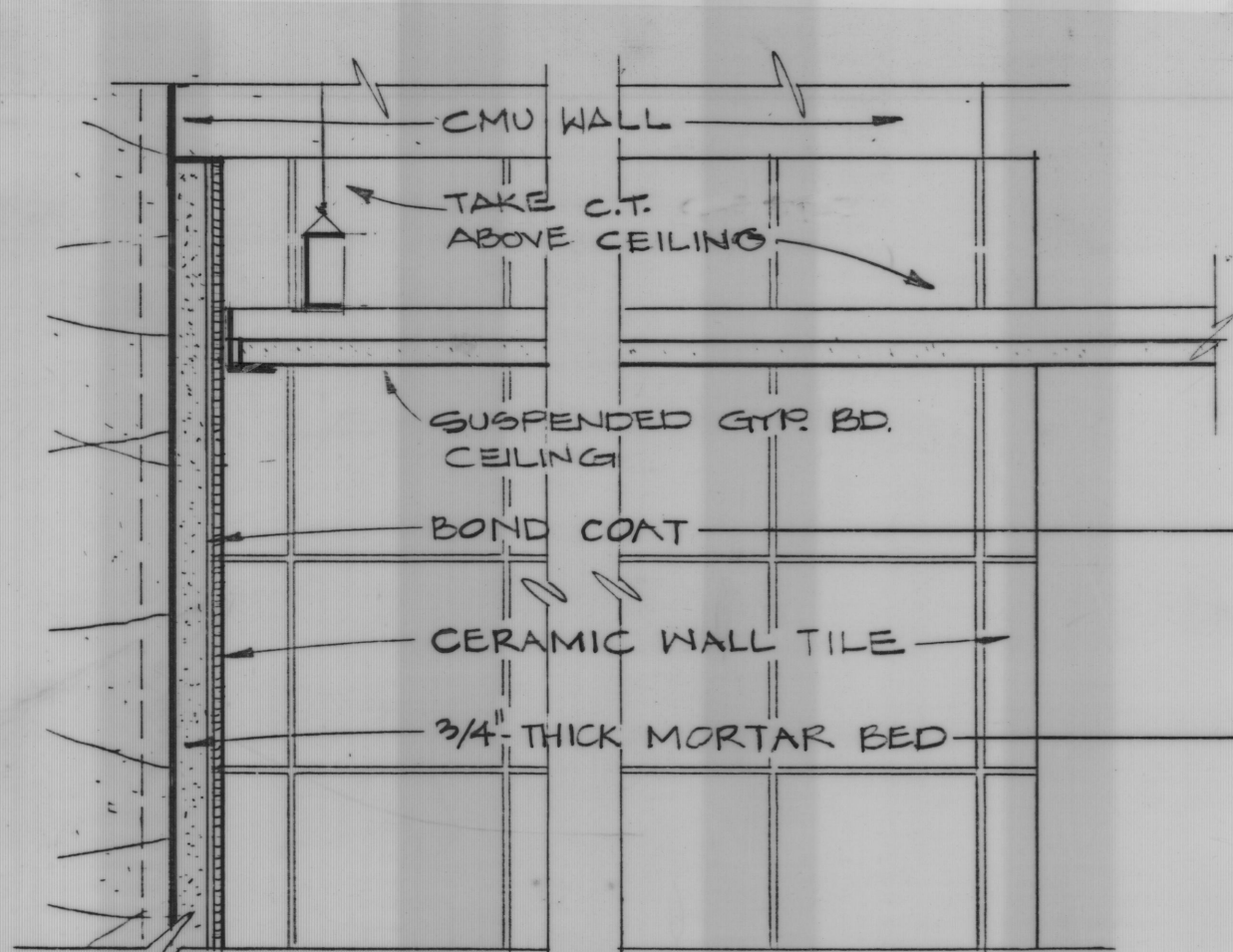
- 72 7'-0" AFF
- 82 8'-0" AFF
- 83 8'-3" AFF
- 92 9'-3" AFF



## 7 PARTIAL PLAN WITH EQUIPMENT

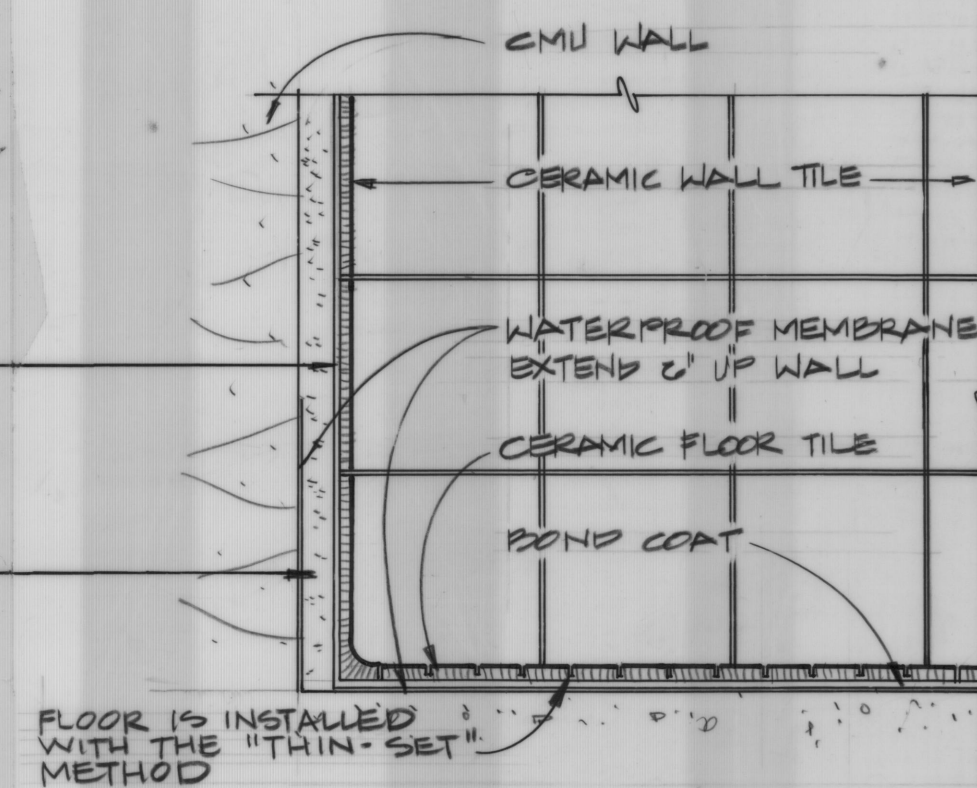
SCALE 1/4" = 1'-0"

ALL ITEMS SHOWN DASHED ARE OWNER FURNISHED EQUIPMENT (O.F.E.)  
IT IS IMPORTANT THAT EXISTING AQUATROL BE RELOCATED SO THAT IT AND THE NEW CONSOLE FIT BETWEEN THE ENTRANCE STEPS PROPERLY.



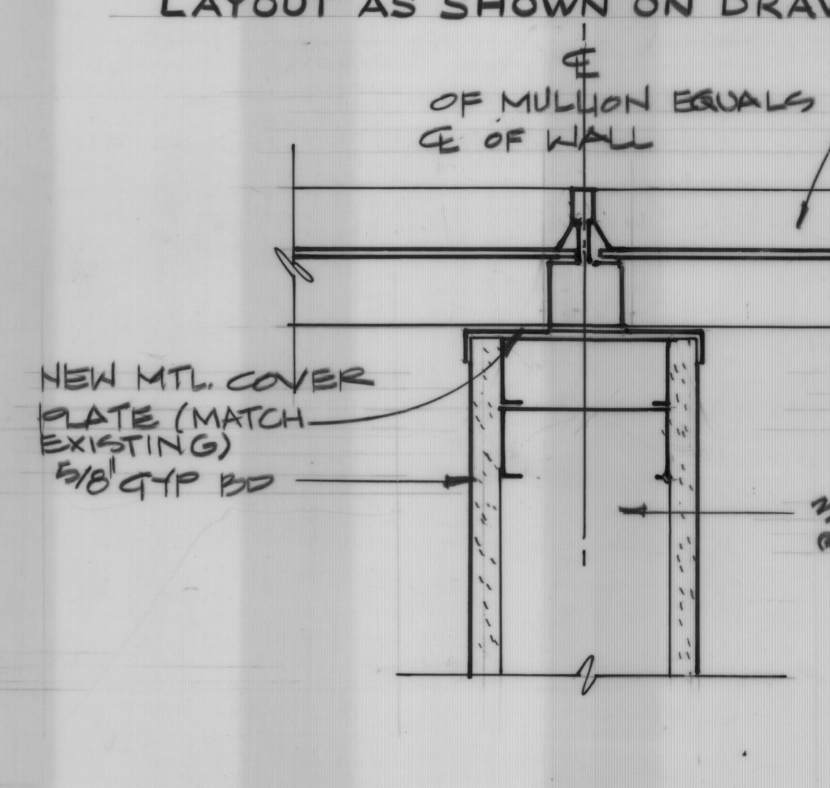
## 1 CERAMIC TILE @ WALL

3/8" = 1'-0"



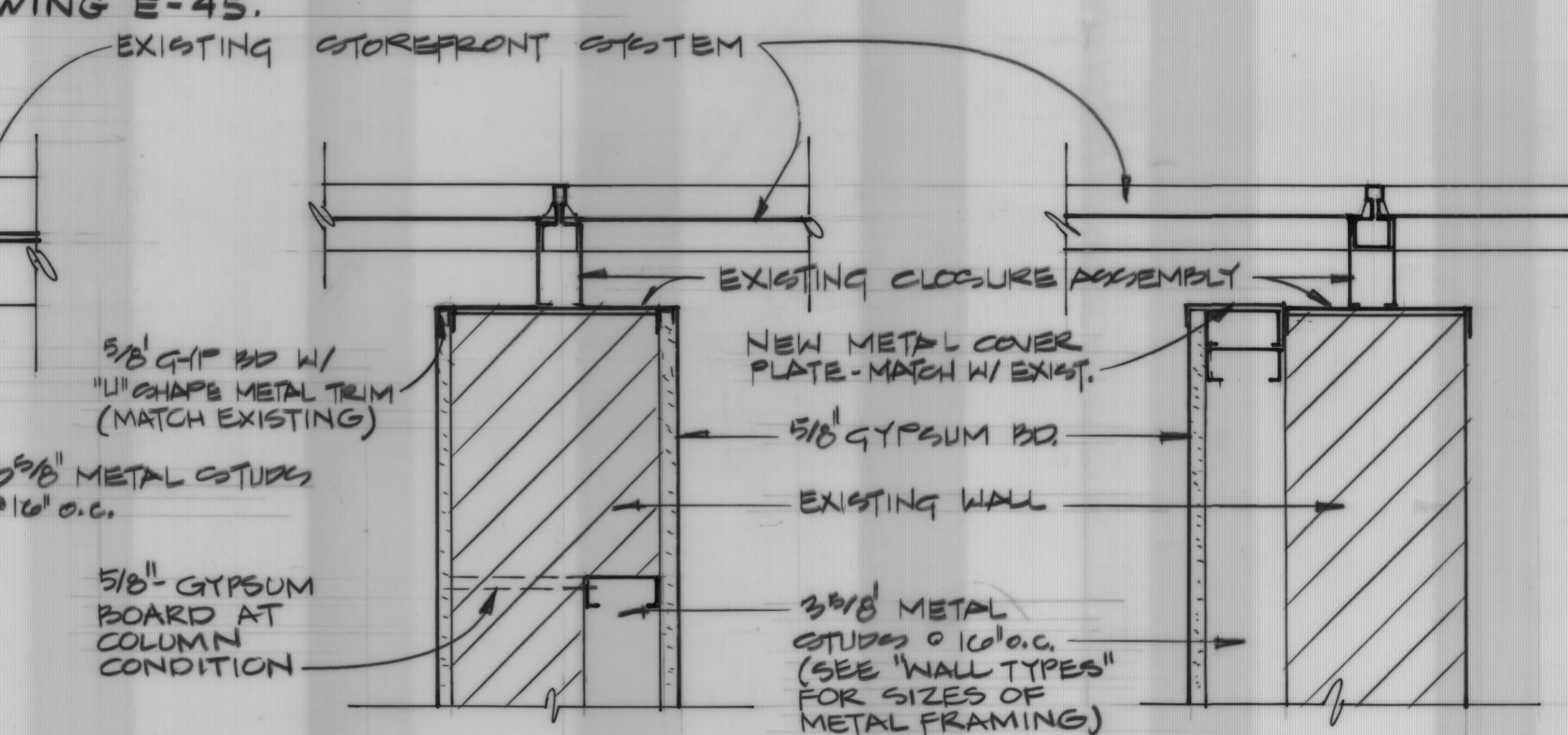
## 2 CERAMIC TILE @ FLOOR

3/8" = 1'-0"



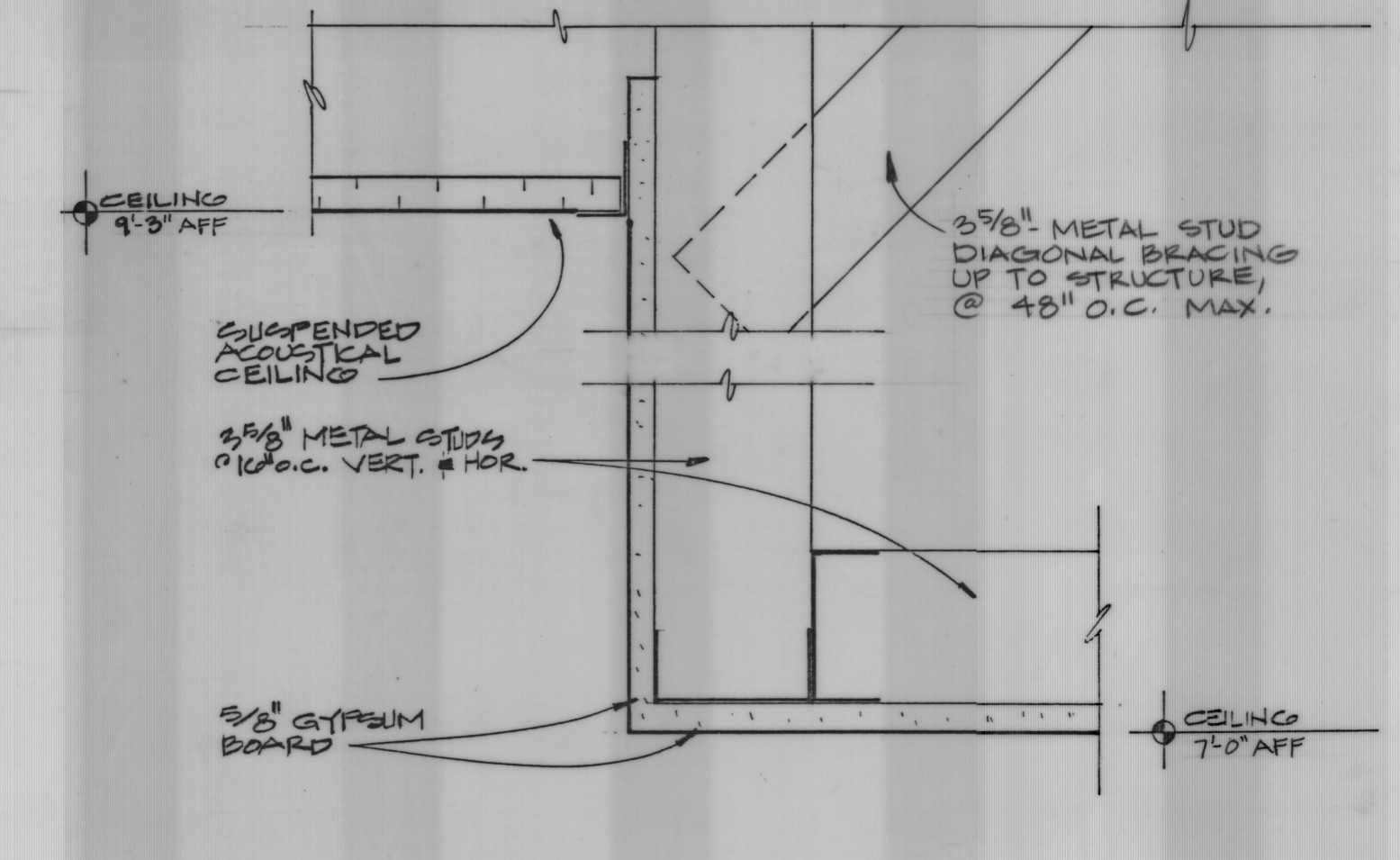
## 3 WALL @ STOREFRONT

3/8" = 1'-0"



## 4 WALL DETAIL

1/2" = 1'-0"



## 5 WALL DETAIL

1/2" = 1'-0"

## 6 CEILING DROP

3/8" = 1'-0"

UNIVERSAL ENGINEERING CORPORATION  
CONSULTING ENGINEERS  
BOSTON, MASSACHUSETTS

A JOINT VENTURE

DAVIS AND FLOYD, INC.  
CONSULTING ENGINEERS  
GREENWOOD, S.C. NORTH CHARLESTON, S.C.

OWNER  
NORTH CHARLESTON SEWER DISTRICT

TITLE  
OPERATIONS BUILDING  
REFLECTED CEILING PLAN & DETAILS

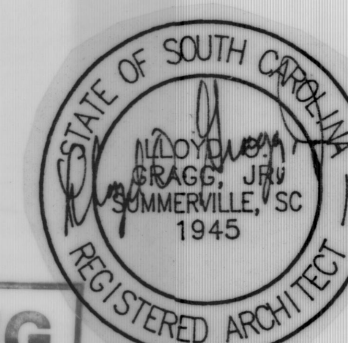
DESIGNED: ALW  
DRAWN: ALW  
CHECKED: JAW  
APPROVED: LOG

JUL 11 1992  
DATE

RECORD DRAWINGS

REVISIONS

SCALE: AS SHOWN  
DATE: NOVEMBER 1988



CONTRACT NO. 4110/8603  
SH. 40 OF 219  
A-21 OF 32



